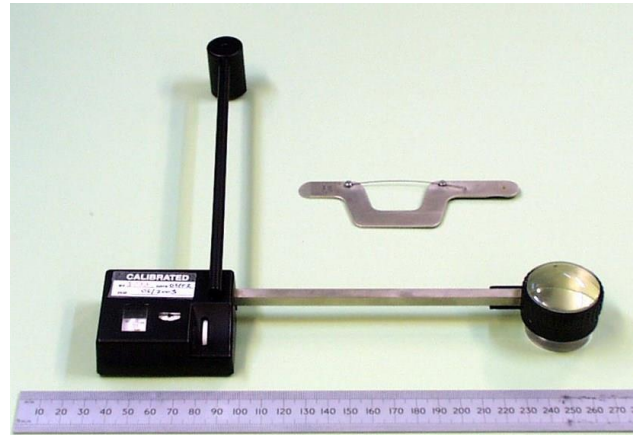


## Planimeter

### **Description:**

This instrument is used to measure the area of a closed shape, typically drawn on a piece of paper. In particular:

- The impression of the cushion of an earmuff, once the muff has been removed from the INSPEC Fit and force test equipment. Having noted the indicated headband force and having measured the area of the impression; the cushion pressure can be calculated;
- The area of the apertometer diagram (field of vision of a full face mask in EN 136), established using the INSPEC Apertometer.



### **Services required:**

None

### **Approximate packed size & weight:**

30 x 15 x 10 cm : 1 kg

### **Relevant standards:**

EN 136:2004, clause 8.17 and figure 15  
EN 13819-1:2002, clause 4.5.2.3 and figure 4